



Workabout Pro 4

EMC Configuration and Accessories Guide

Designed to assist customers and partners with model and configuration guidance



Workabout Pro 4

CONFIGURATION & ACCESSORY GUIDES are available on [The Source](#) and [PartnerCentral](#)

- Also see www.zebra.com/workaboutpro4 and the WAP-4 Configuration and Accessories Guide

Find Product Information in the **EMC Product Portfolio** on [The Source](#) and [PartnerCentral](#)



Partner Central

ENTERPRISE MOBILE COMPUTING

2014 EMC PRODUCT PORTFOLIO

- EMC Resources
- Zebra Solutions At A Glance
- Enterprise Mobile Computing
 - Knowledge Worker Portfolio
 - Line Worker Portfolio
 - EMC Software & Solutions
- Topical Content
 - MSI DS Strategy
 - The Value of Enterprise Class Products

CUSTOMER FACING 

FIELD MOBILITY 

TASK SPECIFIC 

INDUSTRIAL MOBILITY 

- WAP-4 Third party accessories:
 - www.Portsmouth.com

Workabout Pro 4 Main Variants



Workabout Pro 4

Workabout Pro 4 Long - Alpha Numeric Keyboard

- Windows CE 6.0
- Windows Embedded Hand Held 6.5

Workabout Pro 4 Short – Numeric Keyboard Workabout Pro 4 Short – Qwerty Keyboard

- Windows CE 6.0
- Windows Embedded Hand Held 6.5

WAP4 Operating System Options



Microsoft Windows Embedded
Handheld 6.5 Classic Edition



Operating System Configurations

Microsoft Windows

Embedded Handheld 6.5 Classic Edition

Microsoft Windows

Embedded Compact 6.0

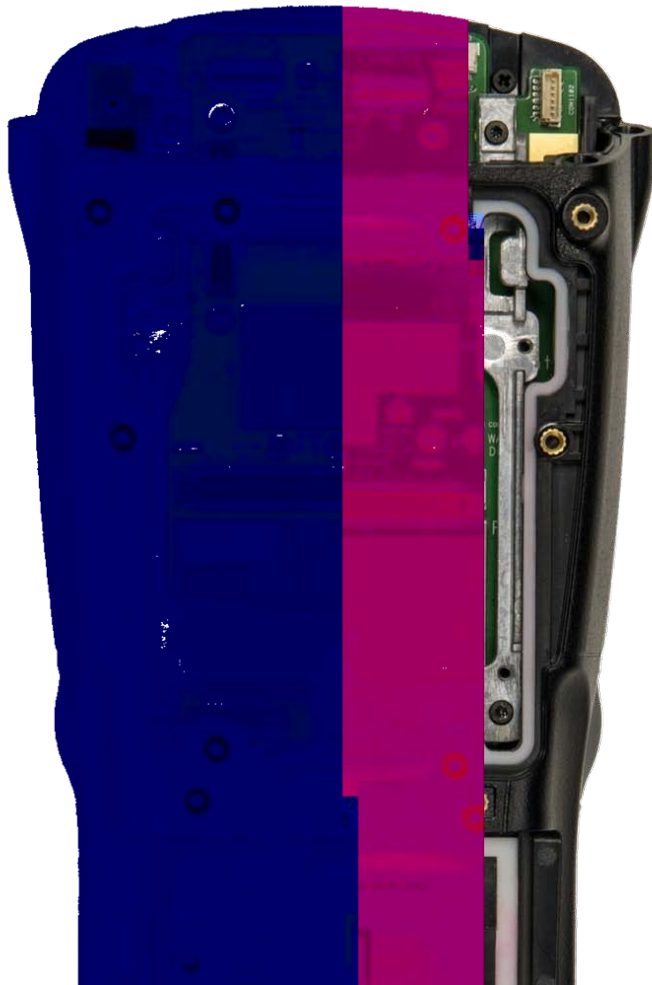


Microsoft Windows
Embedded Compact 6.0



OS in Local languages available for download on
Support Central https://portal.zebra.com/Support/US-EN/Mobile+Networks+RFID+and+BarCode+Scanners/Mobile+Computers/Handheld+Computers/WorkaboutPro4_US-EN

WAP4 Radio Options



Built-in Radios

802.11 A/B/G/N, **No Diversity** Antenna with Bluetooth 2.0 + EDR

802.11 A/B/G/N, **Diversity** Antenna with Bluetooth 2.0 + EDR, **GPS** and No Stylus

802.11 A/B/G/N, Diversity Antenna with Bluetooth 2.0 + EDR, **UMTS / HSPA+, CE Countries and No Stylus**

802.11 A/B/G/N, Diversity Antenna with Bluetooth 2.0 + EDR, **UMTS / HSPA+, FCC / IC Countries and No Stylus**

Applicable only for Upgrades / Reconfiguration

Radio Modules

RA3051 HSPA+ WAN expansion module, compatible with Short and Long configurations, end-cap of choice is ordered separately.

RA3052 Diversity Wi-Fi / Stand alone GPS antenna module, compatible with Short and Long configurations, end-cap of choice is ordered separately.

Installation instructions for Radio Modules:

<http://www.ingenuityworking.com/knowledge/w/knowledgebase/1525.workabout-pro4-product-manuals.aspx>

WAP4 End-cap Options

Choose end cap for **best ergonomic solution!**

Data Capture End-Caps

WA9022	SE1524ER 1D Lorax extended range laser
WA9016	SE965 1D Standard range laser
WA9018	SE655 1D Linear imager
WA9020	SE4500 2D Imager

OR

Other End-Caps

WA6212	WAN/GPS/Wi-Fi diversity end-cap
WA6213	Multi-purpose end cap
WA6215	Headset adapter end-cap
WA6214	Standard blank end-cap, with stylus

Optional pistol grip

WA6103

WA6103
Pistol Grip

Pistol grip attachment kit. Includes flush mount pistol grip with trigger, and screws

Applicable only for Upgrades / Reconfiguration



When using WA9022 Lorax Laser end-cap with or without pistol grip, a trigger board WA9301 is required as back cover, so camera (located in back cover) is not compatible. WAN upgrade is not compatible with Lorax End cap

For all other end-cap engines, a trigger board WA9302 is required **ONLY** when using the pistol grip.

WA9022
1D Lorax Laser

WA9016
1D Standard Range Laser

WA9018
1D Linear Imager

WA6213
Multi-purpose end cap

WA9020
2D Imager



All end-cap scanners and pistol grip are compatible with short and long configurations

WAP4 RFID End Caps/Back Covers

Ultra High Frequency (UHF)

WA9901 Linear antenna, FCC / IC country certified end cap

WA9902 Linear antenna, CE Country certified end cap

WA9903 Circular antenna, FCC / IC Country certified back cover

WA9904 Circular antenna, CE Country certified back cover

Both UHF antenna modules are compatible with scanners, pod scanner for linear variant and end cap scanner for circular RFID variant.

All circular UHF antenna modules are installed to the WAP4 units as back-covers

! Linear antenna is sensitive to tag orientation, circular antenna is not.

High (HF) and Low Frequency (LF) End Caps

WA9905 HF module, FCC/IC, CE country certified end cap

WA9906 LF module, FCC/IC, CE country certified end cap

All RFID options are compatible with or without a WAN radio. Before choosing any combination, review the local country approval list.



WAP4 Trigger Boards

Trigger Boards

WA9301 Trigger board for SE1524-ER, 1D Lorax extended range laser end-cap.

WA9302 Trigger board for 1D standard range laser or 1D/2D imager end-cap

Additional pistol grip

WA6103 Pistol grip attachment kit. Includes flush mount pistol grip with trigger, and screws

WA6103
Pistol Grip

**Applicable only for
Upgrades / Reconfiguration**



Trigger board WA9301 is always required when using WA9022 Lorax laser end-cap with or without pistol grip

Trigger board WA9302 is required for 1D laser or 1D/2D imager **ONLY** when using the pistol grip

Trigger Board Back Cover

Inside Back Cover

WA9301
Trigger Board for Lorax Laser
End-Cap

WA9302
Trigger Board for 1D Laser or
1D/2D Imager End-Cap



All trigger boards are compatible with short and long configurations

WAP4 Back Cover Options

Choose slim pod scan engine if you **need additional technology** in end cap (e.g., RFID LF, HF, UHF Linear, Head Set Jack, etc.)

Back Covers

- WA6208** Standard blank back-cover
- WA9021** 8.0 megapixel camera module (not available for Lorax End cap and Win CE OS)

OR

Slim Pod Engines

- WA9017** SE655 1D Linear imager
- WA9019** SE4500 2D Imager
- WA9015** SE965 1D Standard range laser

Optional pistol grip

WA6003

Pistol grip attachment for slim pod
Slim pods with pistol grip increases terminal's Z dimension

**Applicable only for
Upgrades / Reconfiguration**

WA9021
8MP Camera Module

WA6208
Standard Blank Back-Cover

WA9015
1D Standard
range laser

WA9019
2D Imager


WA9017
1D Linear Imager



All covers, slim pods and pistol grip are compatible with short and long configurations

Slim pods have built in trigger boards!

WAP4 Battery Options

If you're changing battery types, a battery door is required when purchasing Super High Capbatteries 

Extended Battery



Migrating to

WA3010
4400 mAh

WA3026
4680 mAh

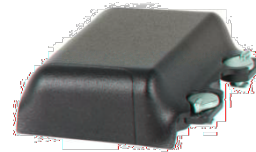
Compatible battery doors:

WA3017-G2

Battery door for **long** configurations

WA3018-G2

Battery door for **short** configurations



Spare Battery



Migrating to

WA3006
3300 mAh

WA3025
2850 mAh

Compatible battery doors:

WA3015-G2


Battery door for **long** configurations


WA3016-G2

Battery door for **short** configurations



WAP4 Charging Methods

 The single slot cradle is compatible with the pistol grip, charges a spare battery and has USB master and slave connections.

 The single slot cradle includes a power supply (PS1050-G1 or PS1050-AR for Argentina) with country adapters and a USB cable.



Single Slot Cradle:

WA4003-G2 Single slot USB cradle for short and long configurations.

WA4003-AR Single slot USB cradle for short and long configurations (Argentina).

Additional Adapters

WA4015-G1

USB to RS232 adapter

WAP4 Charging Methods

The four slot cradle includes a power supply (PS1055-G1). Must purchase specific country AC Line Cord. !

- ! AC Line Cords:
- 9008693 for North America
 - 9008892 for Europe
 - 9008950 for UK

Four Slot Cradle:

WA4204-G2 Four slot Ethernet cradle for all **long** configurations.

WA4304-G2 Four slot Ethernet cradle for all **short** configurations.

Battery Charger



WA3004-G1 Four slot battery charger to be used with high and ultra high capacity batteries. Includes power supply (PS1056-G1). Must order AC line cord separately.

WAP4 Charging Methods

Vehicle cradle:

WA1210-G2

Vehicle cradle 12V, for use with **long** configurations

WA1310-G2

Vehicle cradle 12V, for use with **short** configurations



Vehicle charge cable:

RV3050

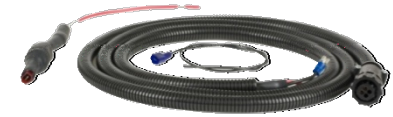
Vehicle charge cable, allows to charge directly any long or short configurations.




When using the vehicle cradle, the universal RAM mount is required (Order separately WA4006)



CA3002



CA1210

For powered connection, must order a power cable 9-20V input (CA1210) or the vehicle power outlet adapter cable (CA3002) 

Optional Accessories

WA4005-G1

Port replicator connects serial devices to the vehicle cradle.

PS1350

Pre-regulator module required when connecting the vehicle cradle to power sources above 20V to a maximum of 72V.

WAP4 Carrying Accessories

Holsters

WA6083 Soft Holster and Belt for use with all short and long configurations when using the pistol grip. Includes belt, tether (pistol grip to holster) and leg strap.

WA6084 Nylon Pouch for use with all short and long configurations when using the pistol grip. The nylon pouch is not approved in FCC countries.

Carry Cases

WA6080 Standard carry case, for use with **long** configurations. Includes belt clip.

WA6180 Standard Carry Case, for use with **short** configurations. Includes belt clip.

WA6081 Carry case (open ended), for use with **long** configurations while using end cap scanners and most RFID options.

WA6181 Carry case (open ended), for use with **short** configurations while using end cap scanners and most RFID options.

* Note: Carry cases are not approved in FCC countries

Optional shoulder strap for carry cases

CV6021

Shoulder strap for use with all carry cases.

WAP4 Carrying Accessories

Rubber Boots

WA6400 Rubber boot for use with **long LAN** configurations with/without using scanner pods/pistol grip

WA6402 Rubber boot for use with **long extended range laser** configuration with/without using pistol grip

WA6400
Rubber Boot

Optional shoulder strap for rubber boots

CV6021 Shoulder strap for use with all rubber boots



WA6402
Rubber Boot for Long
Extended Range Laser

WAP4 Carrying Accessories

Hand Straps

WA6025 Hand strap with mobile stylus (double loop) for **long** configurations

WA6125 Hand strap with stylus (double loop) for **short** configurations

Hand Straps include a tethered stylus !

Miscellaneous

WA6100-G1 Replacement end cap stylus (pack of 5)

WA6310-G1 Mobile stylus with holder kit, includes stylus, tether and holder

WA6113 Screen Protector (pack of 3)



WA6025
Hand Strap with Mobile Stylus

WA6310-G1
Mobile Stylus with Holder Kit

WAP4 Optional Tether Adapters

Tether Open-Ended Cable

CA2950-G1

Open ended cable with strain relief (150mm/ 6ft)

Tether to Dsub9 Cable

WA4020-G2

It provides RS232 connectivity (Dsub9 connector) to any short and long configurations through the tether port.

Tether to USB A Cable

WA1002

It provides USB A connectivity to any short and long configs through the tether port. Supports USB peripherals. Not used for active sync.

USB to Ethernet Adapter (3rd party)

PSA1U1E

USB to Ethernet adapter with no separate power supply requirement.

WAP-4 Third party accessories:

www.Portsmouth.com