



IN-COUNTER HIGH PERFORMANCE BAR CODE READER

The Magellan™ 3500HSi series of scanners continue the Datalogic tradition of high performance imaging for the high-volume point-of-sale. By duplicating the speed and large field-of-view of laser scanners and expanding the capabilities of imaging, the 3500HSi scanners provide outstanding performance on hard-to-read bar codes and seamless reading of a wide variety of bar codes. This Magellan scanner enables both high speed sweep and presentation scanning techniques ensuring maximum productivity and ergonomic ease, even with truncated (shortened), out-of-spec or poorly printed codes.



ENHANCING THE CUSTOMER EXPERIENCE

The optional Magellan Customer Service Scanner (CSS) enables retailers to easily engage their customers in mobile commerce programs, allowing them to scan bar codes from mobile phone screens or paper coupons while the cashier continues to scan regular items in parallel, resulting in a significant reduction in total transaction time.

ENTERPRISE FEATURES

Remote management is supported for OPOS, JavaPOS, Toshiba Remote Management with IBM Systems Director® and Wavelink® Avalanche®. Additional capabilities are available with the Value Added Features included in every Magellan scanner.



FEATURES

- Advanced digital imaging provides class-leading performance and reliability
- Seamless 1D, 2D and Digimarc® digital watermark reading
- Smoothly reads all bar codes, whether displayed on cell phones or printed
- Subtle, adaptive illumination for user comfort
- Solid-state electronics for silent operation and superior reliability
- Available Magellan Customer Service Scanner (CSS) with omni-mount for reading cell phones, coupons and loyalty cards
- Software driven - flexible and upgradeable
- Image capture
- Micro SD card slot
- Multiple interfaces in every unit
- Powered USB auxiliary port
- Checkpoint Systems and Tyco Sensormatic EAS compatible
- Diagnostics reporting
- EASEOFCARE Service Plans offer a wide range of service options to protect your investment, ensuring maximum productivity and ROI

INDUSTRY-APPLICATIONS

- Retail: Point of Sale, Mobile Marketing Capabilities, Age Verification, 2D Bar Codes

TECHNICAL SPECIFICATIONS

DECODING CAPABILITY

1D / LINEAR CODES	Autodiscriminates all standard 1D codes including GS1 DataBar™ linear codes.
2D CODES	Aztec Code; Data Matrix (ECC200 only); MaxiCode; QR Code
STACKED CODES	GS1 DataBar Composites; GS1 DataBar Expanded Stacked; GS1 DataBar Stacked; GS1 DataBar Stacked Omnidirectional; MicroPDF417; PDF417
DIGITAL WATERMARKS	Optional support for Digimarc® Barcode/GS1 DW Code

ELECTRICAL

AC POWER REQUIREMENTS	AC Input: 100-240 VAC, 50-60 Hz
POWER CONSUMPTION	Operating (Maximum): 4.0 Watts; Operating (Nominal): 3.0 Watts Sleep Mode: 2.8 Watts

ENVIRONMENTAL

AMBIENT LIGHT	0 - 86,100 lux
ESD PROTECTION (AIR DISCHARGE)	25 kV
HUMIDITY (NON-CONDENSING)	5 - 95%
PARTICULATE AND WATER SEALING	IP52
TEMPERATURE	Operating: 0 to 40 °C / 32 to 104 °F Storage/Transport: -40 to 70 °C / -40 to 158 °F

INTERFACES

INTERFACES	OEM (IBM) USB; RS-232; USB Keyboard; USB COM
AUXILIARY PORTS	Powered Type A USB (USB Com)

OPTIONAL FEATURES

EAS FEATURES	Checkpoint Systems: Integrated EAS hardware will work with Counterpoint IX and Evolve D11 models;
VALUE ADDED FEATURES	Sensomatic: Good Read Acknowledgement Diagnostic Reporting; Host Download; Magellan ULE Scripting

PHYSICAL CHARACTERISTICS

DIMENSIONS	Magellan Model 3550HSi: Depth (Below Counter): 8.7 cm / 3.4 in Length: 15.2 cm / 6.0 in Width: 15.2 cm / 6.0 in
WEIGHT	0.98 kg / 2.16 lb

READING PERFORMANCE

IMAGE CAPTURE	Graphic Formats: BMP, JPEG
IMAGER SENSOR	1280 x 1024
LIGHT SOURCE	Multiple diffused LEDs, orientation and wavelength optimized for eye comfort
PRINT CONTRAST RATIO (MINIMUM)	25%
READ HEIGHT	10.2 cm / 4.0 in
READ RATE (MAXIMUM)	39 million pixels per second
READING INDICATORS	Audio speaker with adjustable tone and volume, supports .wav files; Good Read LED;
	Good Transmission
RESOLUTION (MAXIMUM)	5 mil

SAFETY & REGULATORY

AGENCY APPROVALS	The product meets necessary safety and regulatory approvals for its intended use.
ENVIRONMENTAL COMPLIANCE	Complies to China RoHS; Complies to EU RoHS
LED CLASSIFICATION	EN62471 and IEC62471 Lamp Illumination - Exempt Group

UTILITIES

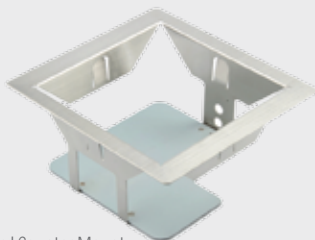
SCANALYZER™	Magellan Scanalyzer configuration software is available for download at www.datalogic.com .
OPOS / JAVAPOS	JavaPOS Utilities are available for download at no charge. OPOS Utilities are available for download at no charge.

WARRANTY

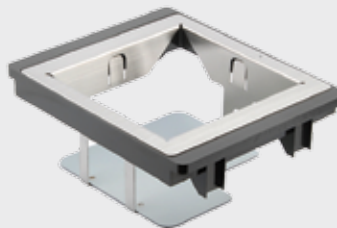
WARRANTY	3-Year Factory Warranty
----------	-------------------------

ACCESSORIES

Mounts/Stands



• 11-0027 Standard Counter Mount



• 11-0178 Standard Counter Mount with Magellan HS1250 Fill Kit